



: GTS201607000169C01

Applicant : RADIOLINK ELECTRONIC LIMITED

Address of Applicant : 3/F, Building 2, Fuguo industrial park, Kaifeng Road, Meilin,
Shenzhen, Guangdong China

Manufacturer : RADIOLINK ELECTRONIC LIMITED

Manufacturer of Address : 3/F, Building 2, Fuguo industrial park, Kaifeng Road, Meilin,
Shenzhen, Guangdong China

Reference information : 2.4G Digital Proportional R/C system

Model name : AT9, AT9S

Remark : AT9 and AT9S are identical in the same PCB layout, interior structure and
electrical circuits. The only differences model name and appearance for
commercial purpose.

Report Received Date : July 28, 2016

Report Issued Date : July 30, 2016

Test Result : (Please refer to next page)

Remark: All reports as specified by client, determine the Lead, Cadmium, Mercury, Hexavalent Chromium and PBB& PBDE or more content in the submitted samples which are restricted in Directive 2011/65/EU as last amend by 2005/618/EC, 2005/717/EC, 2005/747/EC, 2006/310/EC, 2002/95/EC (RoHS).

Signed for and on behalf of



***** For Further Details, Please Refer To the Following Page(s) *****

Test Result of XRF

As per IEC 62321-3-1:2013, screened by XRF spectroscopy.

No.	Component Description	Test Item	XRF Result
1	Shell	Cadmium (Cd)	P
		Lead (Pb)	P
		Mercury (Hg)	P
		Chromium (Cr)	P
		Bromine (Br)	P
2	Black plastic bracket of screen	Cadmium (Cd)	P
		Lead (Pb)	P
		Mercury (Hg)	P
		Chromium (Cr)	P
		Bromine (Br)	P
3	White plastic frame of screen	Cadmium (Cd)	P
		Lead (Pb)	P
		Mercury (Hg)	P
		Chromium (Cr)	P
		Bromine (Br)	P
4	Transparent plastic of screen	Cadmium (Cd)	P
		Lead (Pb)	P
		Mercury (Hg)	P
		Chromium (Cr)	P
		Bromine (Br)	P
5	Transparent screen	Cadmium (Cd)	P
		Lead (Pb)	P
		Mercury (Hg)	P
		Chromium (Cr)	P
		Bromine (Br)	P
6	Screen	Cadmium (Cd)	P
		Lead (Pb)	P
		Mercury (Hg)	P
		Chromium (Cr)	P
		Bromine (Br)	P
7	Black plastic base of battery	Cadmium (Cd)	P
		Lead (Pb)	P
		Mercury (Hg)	P
		Chromium (Cr)	P
		Bromine (Br)	P
8	Black plastic of terminal	Cadmium (Cd)	P
		Lead (Pb)	P
		Mercury (Hg)	P
		Chromium (Cr)	P
		Bromine (Br)	P

Test Result of XRF

No.	Component Description	Test Item	XRF Result
9	Shell of emitter	Cadmium (Cd)	P
		Lead (Pb)	P
		Mercury (Hg)	P
		Chromium (Cr)	P
		Bromine (Br)	P
10	Black plastic of button	Cadmium (Cd)	P
		Lead (Pb)	P
		Mercury (Hg)	P
		Chromium (Cr)	P
		Bromine (Br)	P
11	Black plastic of switch	Cadmium (Cd)	P
		Lead (Pb)	P
		Mercury (Hg)	P
		Chromium (Cr)	P
		Bromine (Br)	P
12	White wire terminal	Cadmium (Cd)	P
		Lead (Pb)	P
		Mercury (Hg)	P
		Chromium (Cr)	P
		Bromine (Br)	P
13	Black plastic of key-press	Cadmium (Cd)	P
		Lead (Pb)	P
		Mercury (Hg)	P
		Chromium (Cr)	P
		Bromine (Br)	P
14	Black plastic shell of button	Cadmium (Cd)	P
		Lead (Pb)	P
		Mercury (Hg)	P
		Chromium (Cr)	P
		Bromine (Br)	P
15	Red plastic of controlling switch	Cadmium (Cd)	P
		Lead (Pb)	P
		Mercury (Hg)	P
		Chromium (Cr)	P
		Bromine (Br)	P
16	Black soft wire covering	Cadmium (Cd)	P
		Lead (Pb)	P
		Mercury (Hg)	P
		Chromium (Cr)	P
		Bromine (Br)	P

Test Result of XRF

No.	Component Description	Test Item	XRF Result
17	Red soft wire covering	Cadmium (Cd)	P
		Lead (Pb)	P
		Mercury (Hg)	P
		Chromium (Cr)	P
		Bromine (Br)	P
18	Red soft thin wire covering	Cadmium (Cd)	P
		Lead (Pb)	P
		Mercury (Hg)	P
		Chromium (Cr)	P
		Bromine (Br)	P
19	Black soft thin wire covering	Cadmium (Cd)	P
		Lead (Pb)	P
		Mercury (Hg)	P
		Chromium (Cr)	P
		Bromine (Br)	P
20	White soft thin wire covering	Cadmium (Cd)	P
		Lead (Pb)	P
		Mercury (Hg)	P
		Chromium (Cr)	P
		Bromine (Br)	P
21	Black plastic cover of antenna	Cadmium (Cd)	P
		Lead (Pb)	P
		Mercury (Hg)	P
		Chromium (Cr)	P
		Bromine (Br)	P
22	Black plastic of antenna	Cadmium (Cd)	P
		Lead (Pb)	P
		Mercury (Hg)	P
		Chromium (Cr)	P
		Bromine (Br)	P
23	Black plastic	Cadmium (Cd)	P
		Lead (Pb)	P
		Mercury (Hg)	P
		Chromium (Cr)	P
		Bromine (Br)	P
24	Black wire covering of battery	Cadmium (Cd)	P
		Lead (Pb)	P
		Mercury (Hg)	P
		Chromium (Cr)	P
		Bromine (Br)	P

Test Result of XRF

No.	Component Description	Test Item	XRF Result
25	Red wire covering of battery	Cadmium (Cd)	P
		Lead (Pb)	P
		Mercury (Hg)	P
		Chromium (Cr)	P
		Bromine (Br)	P
26	Yellow wire covering	Cadmium (Cd)	P
		Lead (Pb)	P
		Mercury (Hg)	P
		Chromium (Cr)	P
		Bromine (Br)	P
27	Black wire covering	Cadmium (Cd)	P
		Lead (Pb)	P
		Mercury (Hg)	P
		Chromium (Cr)	P
		Bromine (Br)	P
28	Blue wire covering	Cadmium (Cd)	P
		Lead (Pb)	P
		Mercury (Hg)	P
		Chromium (Cr)	P
		Bromine (Br)	P
29	Red wire covering	Cadmium (Cd)	P
		Lead (Pb)	P
		Mercury (Hg)	P
		Chromium (Cr)	P
		Bromine (Br)	P
30	Silver color metal of terminal	Cadmium (Cd)	P
		Lead (Pb)	P
		Mercury (Hg)	P
		Chromium (Cr)	P
		Bromine (Br)	--
31	Metal of USB base	Cadmium (Cd)	P
		Lead (Pb)	P
		Mercury (Hg)	P
		Chromium (Cr)	P
		Bromine (Br)	--
32	Silver color metal shell of button	Cadmium (Cd)	P
		Lead (Pb)	P
		Mercury (Hg)	P
		Chromium (Cr)	P
		Bromine (Br)	--

Test Result of XRF

No.	Component Description	Test Item	XRF Result
33	Silver color metal washer of BAT button	Cadmium (Cd)	P
		Lead (Pb)	P
		Mercury (Hg)	P
		Chromium (Cr)	P
		Bromine (Br)	--
34	Metal of BAT button	Cadmium (Cd)	P
		Lead (Pb)	P
		Mercury (Hg)	P
		Chromium (Cr)	P
		Bromine (Br)	--
35	Black metal shell of switch	Cadmium (Cd)	P
		Lead (Pb)	P
		Mercury (Hg)	P
		Chromium (Cr)	P
		Bromine (Br)	--
36	Metal washer of key-press	Cadmium (Cd)	P
		Lead (Pb)	P
		Mercury (Hg)	P
		Chromium (Cr)	P
		Bromine (Br)	--
37	Silver color metal washer of key-press	Cadmium (Cd)	P
		Lead (Pb)	P
		Mercury (Hg)	P
		Chromium (Cr)	P
		Bromine (Br)	--
38	Silver color metal of controlling button	Cadmium (Cd)	P
		Lead (Pb)	P
		Mercury (Hg)	P
		Chromium (Cr)	P
		Bromine (Br)	--
39	Silver color metal strip of controlling switch	Cadmium (Cd)	P
		Lead (Pb)	6581.9 ^{<1>}
		Mercury (Hg)	P
		Chromium (Cr)	P
		Bromine (Br)	--
40	Silver color metal of controlling switch	Cadmium (Cd)	P
		Lead (Pb)	P
		Mercury (Hg)	P
		Chromium (Cr)	P
		Bromine (Br)	--

Test Result of XRF

No.	Component Description	Test Item	XRF Result
41	Silver color metal of controlling switch	Cadmium (Cd)	P
		Lead (Pb)	P
		Mercury (Hg)	P
		Chromium (Cr)	P
		Bromine (Br)	--
42	Silver color metal of antenna	Cadmium (Cd)	P
		Lead (Pb)	P
		Mercury (Hg)	P
		Chromium (Cr)	P
		Bromine (Br)	--
43	Silver color metal bracket	Cadmium (Cd)	P
		Lead (Pb)	P
		Mercury (Hg)	P
		Chromium (Cr)	P
		Bromine (Br)	--
44	Sticker of screen	Cadmium (Cd)	P
		Lead (Pb)	P
		Mercury (Hg)	P
		Chromium (Cr)	P
		Bromine (Br)	P
45	Sticker of screen	Cadmium (Cd)	P
		Lead (Pb)	P
		Mercury (Hg)	P
		Chromium (Cr)	P
		Bromine (Br)	P
46	Sticker of screen	Cadmium (Cd)	P
		Lead (Pb)	P
		Mercury (Hg)	P
		Chromium (Cr)	P
		Bromine (Br)	P
47	Sticker of screen	Cadmium (Cd)	P
		Lead (Pb)	P
		Mercury (Hg)	P
		Chromium (Cr)	P
		Bromine (Br)	P
48	FPC of screen	Cadmium (Cd)	P
		Lead (Pb)	P
		Mercury (Hg)	P
		Chromium (Cr)	P
		Bromine (Br)	P

Test Result of XRF

No.	Component Description	Test Item	XRF Result
49	LED of screen	Cadmium (Cd)	P
		Lead (Pb)	P
		Mercury (Hg)	P
		Chromium (Cr)	P
		Bromine (Br)	P
50	Spring of battery base	Cadmium (Cd)	P
		Lead (Pb)	P
		Mercury (Hg)	P
		Chromium (Cr)	P
		Bromine (Br)	--
51	Wire terminal of battery base	Cadmium (Cd)	P
		Lead (Pb)	P
		Mercury (Hg)	P
		Chromium (Cr)	P
		Bromine (Br)	P
52	PCB of emitter	Cadmium (Cd)	P
		Lead (Pb)	P
		Mercury (Hg)	P
		Chromium (Cr)	P
		Bromine (Br)	P
53	Capacitor	Cadmium (Cd)	P
		Lead (Pb)	P
		Mercury (Hg)	P
		Chromium (Cr)	P
		Bromine (Br)	P
54	Capacitor	Cadmium (Cd)	P
		Lead (Pb)	P
		Mercury (Hg)	P
		Chromium (Cr)	P
		Bromine (Br)	P
55	Triode	Cadmium (Cd)	P
		Lead (Pb)	P
		Mercury (Hg)	P
		Chromium (Cr)	P
		Bromine (Br)	P
56	Triode	Cadmium (Cd)	P
		Lead (Pb)	P
		Mercury (Hg)	P
		Chromium (Cr)	P
		Bromine (Br)	P

Test Result of XRF

No.	Component Description	Test Item	XRF Result
57	Triode	Cadmium (Cd)	P
		Lead (Pb)	P
		Mercury (Hg)	P
		Chromium (Cr)	P
		Bromine (Br)	P
58	Diode	Cadmium (Cd)	P
		Lead (Pb)	P
		Mercury (Hg)	P
		Chromium (Cr)	P
		Bromine (Br)	P
59	Diode	Cadmium (Cd)	P
		Lead (Pb)	P
		Mercury (Hg)	P
		Chromium (Cr)	P
		Bromine (Br)	P
60	Capacitor	Cadmium (Cd)	P
		Lead (Pb)	P
		Mercury (Hg)	P
		Chromium (Cr)	P
		Bromine (Br)	P
61	Crystal	Cadmium (Cd)	P
		Lead (Pb)	P
		Mercury (Hg)	P
		Chromium (Cr)	P
		Bromine (Br)	--
62	Crystal	Cadmium (Cd)	P
		Lead (Pb)	P
		Mercury (Hg)	P
		Chromium (Cr)	P
		Bromine (Br)	--
63	Silver color metal of key-press	Cadmium (Cd)	P
		Lead (Pb)	P
		Mercury (Hg)	P
		Chromium (Cr)	P
		Bromine (Br)	--
64	Black plastic of key-press	Cadmium (Cd)	P
		Lead (Pb)	P
		Mercury (Hg)	P
		Chromium (Cr)	P
		Bromine (Br)	P

Test Result of XRF

No.	Component Description	Test Item	XRF Result
65	Metal washer of key-press	Cadmium (Cd)	P
		Lead (Pb)	P
		Mercury (Hg)	P
		Chromium (Cr)	P
		Bromine (Br)	--
66	PIN	Cadmium (Cd)	P
		Lead (Pb)	P
		Mercury (Hg)	P
		Chromium (Cr)	P
		Bromine (Br)	--
67	Black plastic of PIN	Cadmium (Cd)	P
		Lead (Pb)	P
		Mercury (Hg)	P
		Chromium (Cr)	P
		Bromine (Br)	P
68	PCB	Cadmium (Cd)	P
		Lead (Pb)	P
		Mercury (Hg)	P
		Chromium (Cr)	P
		Bromine (Br)	P
69	Pin of terminal	Cadmium (Cd)	P
		Lead (Pb)	P
		Mercury (Hg)	P
		Chromium (Cr)	P
		Bromine (Br)	--
70	White wire terminal	Cadmium (Cd)	P
		Lead (Pb)	P
		Mercury (Hg)	P
		Chromium (Cr)	P
		Bromine (Br)	P
71	PCB	Cadmium (Cd)	P
		Lead (Pb)	P
		Mercury (Hg)	P
		Chromium (Cr)	P
		Bromine (Br)	P
72	Black plastic of USB base	Cadmium (Cd)	P
		Lead (Pb)	P
		Mercury (Hg)	P
		Chromium (Cr)	P
		Bromine (Br)	P

Test Result of XRF

No.	Component Description	Test Item	XRF Result
73	Pin of USB base	Cadmium (Cd)	P
		Lead (Pb)	P
		Mercury (Hg)	P
		Chromium (Cr)	P
		Bromine (Br)	--
74	Red LED	Cadmium (Cd)	P
		Lead (Pb)	P
		Mercury (Hg)	P
		Chromium (Cr)	P
		Bromine (Br)	P
75	Green LED	Cadmium (Cd)	P
		Lead (Pb)	P
		Mercury (Hg)	P
		Chromium (Cr)	P
		Bromine (Br)	P
76	Capacitor	Cadmium (Cd)	P
		Lead (Pb)	P
		Mercury (Hg)	P
		Chromium (Cr)	P
		Bromine (Br)	P
77	Capacitor	Cadmium (Cd)	P
		Lead (Pb)	P
		Mercury (Hg)	P
		Chromium (Cr)	P
		Bromine (Br)	P
78	Capacitor	Cadmium (Cd)	P
		Lead (Pb)	P
		Mercury (Hg)	P
		Chromium (Cr)	P
		Bromine (Br)	P
79	Fuse	Cadmium (Cd)	P
		Lead (Pb)	P
		Mercury (Hg)	P
		Chromium (Cr)	P
		Bromine (Br)	P
80	Diode	Cadmium (Cd)	P
		Lead (Pb)	P
		Mercury (Hg)	P
		Chromium (Cr)	P
		Bromine (Br)	P

Test Result of XRF

No.	Component Description	Test Item	XRF Result
81	Diode	Cadmium (Cd)	P
		Lead (Pb)	P
		Mercury (Hg)	P
		Chromium (Cr)	P
		Bromine (Br)	P
82	Diode	Cadmium (Cd)	P
		Lead (Pb)	P
		Mercury (Hg)	P
		Chromium (Cr)	P
		Bromine (Br)	P
83	Triode	Cadmium (Cd)	P
		Lead (Pb)	P
		Mercury (Hg)	P
		Chromium (Cr)	P
		Bromine (Br)	P
84	Triode	Cadmium (Cd)	P
		Lead (Pb)	P
		Mercury (Hg)	P
		Chromium (Cr)	P
		Bromine (Br)	P
85	Triode	Cadmium (Cd)	P
		Lead (Pb)	P
		Mercury (Hg)	P
		Chromium (Cr)	P
		Bromine (Br)	P
86	Crystal	Cadmium (Cd)	P
		Lead (Pb)	P
		Mercury (Hg)	P
		Chromium (Cr)	P
		Bromine (Br)	--
87	IC	Cadmium (Cd)	P
		Lead (Pb)	P
		Mercury (Hg)	P
		Chromium (Cr)	P
		Bromine (Br)	P
88	IC	Cadmium (Cd)	P
		Lead (Pb)	P
		Mercury (Hg)	P
		Chromium (Cr)	P
		Bromine (Br)	P

Test Result of XRF

No.	Component Description	Test Item	XRF Result
89	IC	Cadmium (Cd)	P
		Lead (Pb)	P
		Mercury (Hg)	P
		Chromium (Cr)	P
		Bromine (Br)	P
90	Resistor	Cadmium (Cd)	P
		Lead (Pb)	P
		Mercury (Hg)	P
		Chromium (Cr)	P
		Bromine (Br)	P
91	IC	Cadmium (Cd)	P
		Lead (Pb)	P
		Mercury (Hg)	P
		Chromium (Cr)	P
		Bromine (Br)	P
92	IC	Cadmium (Cd)	P
		Lead (Pb)	P
		Mercury (Hg)	P
		Chromium (Cr)	P
		Bromine (Br)	P
93	IC	Cadmium (Cd)	P
		Lead (Pb)	P
		Mercury (Hg)	P
		Chromium (Cr)	P
		Bromine (Br)	P
94	Crystal	Cadmium (Cd)	P
		Lead (Pb)	P
		Mercury (Hg)	P
		Chromium (Cr)	P
		Bromine (Br)	--
95	Capacitor	Cadmium (Cd)	P
		Lead (Pb)	P
		Mercury (Hg)	P
		Chromium (Cr)	P
		Bromine (Br)	P
96	PIN	Cadmium (Cd)	P
		Lead (Pb)	P
		Mercury (Hg)	P
		Chromium (Cr)	P
		Bromine (Br)	--

Test Result of XRF

No.	Component Description	Test Item	XRF Result
97	Terminal	Cadmium (Cd)	P
		Lead (Pb)	P
		Mercury (Hg)	P
		Chromium (Cr)	P
		Bromine (Br)	P
98	Black plastic base of key-press	Cadmium (Cd)	P
		Lead (Pb)	P
		Mercury (Hg)	P
		Chromium (Cr)	P
		Bromine (Br)	P
99	Pin of key-press	Cadmium (Cd)	P
		Lead (Pb)	P
		Mercury (Hg)	P
		Chromium (Cr)	P
		Bromine (Br)	--
100	Silver color metal of button	Cadmium (Cd)	P
		Lead (Pb)	P
		Mercury (Hg)	P
		Chromium (Cr)	P
		Bromine (Br)	--
101	Spring of switch	Cadmium (Cd)	P
		Lead (Pb)	P
		Mercury (Hg)	P
		Chromium (Cr)	P
		Bromine (Br)	--
102	Silver color metal of switch	Cadmium (Cd)	P
		Lead (Pb)	P
		Mercury (Hg)	P
		Chromium (Cr)	P
		Bromine (Br)	--
103	Brown plastic of switch	Cadmium (Cd)	P
		Lead (Pb)	P
		Mercury (Hg)	P
		Chromium (Cr)	P
		Bromine (Br)	P
104	Pin of switch	Cadmium (Cd)	P
		Lead (Pb)	P
		Mercury (Hg)	P
		Chromium (Cr)	P
		Bromine (Br)	--

Test Result of XRF

No.	Component Description	Test Item	XRF Result
105	Buzzer	Cadmium (Cd)	P
		Lead (Pb)	P
		Mercury (Hg)	P
		Chromium (Cr)	P
		Bromine (Br)	P
106	White plastic of BAT button	Cadmium (Cd)	P
		Lead (Pb)	P
		Mercury (Hg)	P
		Chromium (Cr)	P
		Bromine (Br)	P
107	Green plastic of BAT button	Cadmium (Cd)	P
		Lead (Pb)	P
		Mercury (Hg)	P
		Chromium (Cr)	P
		Bromine (Br)	P
108	Silver color metal of BAT button	Cadmium (Cd)	P
		Lead (Pb)	P
		Mercury (Hg)	P
		Chromium (Cr)	P
		Bromine (Br)	--
109	Pin of BAT button	Cadmium (Cd)	P
		Lead (Pb)	P
		Mercury (Hg)	P
		Chromium (Cr)	P
		Bromine (Br)	--
110	Wire core	Cadmium (Cd)	P
		Lead (Pb)	P
		Mercury (Hg)	P
		Chromium (Cr)	P
		Bromine (Br)	--
111	Spring	Cadmium (Cd)	P
		Lead (Pb)	P
		Mercury (Hg)	P
		Chromium (Cr)	P
		Bromine (Br)	--
112	Motor	Cadmium (Cd)	P
		Lead (Pb)	P
		Mercury (Hg)	P
		Chromium (Cr)	P
		Bromine (Br)	P

Test Result of XRF

No.	Component Description	Test Item	XRF Result
113	Black thin wire covering of motor	Cadmium (Cd)	P
		Lead (Pb)	P
		Mercury (Hg)	P
		Chromium (Cr)	P
		Bromine (Br)	P
114	Red thin wire covering of motor	Cadmium (Cd)	P
		Lead (Pb)	P
		Mercury (Hg)	P
		Chromium (Cr)	P
		Bromine (Br)	P
115	Screw	Cadmium (Cd)	P
		Lead (Pb)	P
		Mercury (Hg)	P
		Chromium (Cr)	P
		Bromine (Br)	--
116	Screw	Cadmium (Cd)	P
		Lead (Pb)	P
		Mercury (Hg)	P
		Chromium (Cr)	P
		Bromine (Br)	--
117	Screw	Cadmium (Cd)	P
		Lead (Pb)	P
		Mercury (Hg)	P
		Chromium (Cr)	P
		Bromine (Br)	--
118	Screw	Cadmium (Cd)	P
		Lead (Pb)	P
		Mercury (Hg)	P
		Chromium (Cr)	P
		Bromine (Br)	--
119	Nut	Cadmium (Cd)	P
		Lead (Pb)	P
		Mercury (Hg)	P
		Chromium (Cr)	P
		Bromine (Br)	--
120	Grey metal shell	Cadmium (Cd)	P
		Lead (Pb)	P
		Mercury (Hg)	P
		Chromium (Cr)	P
		Bromine (Br)	--

Test Result of XRF

Remark:

(1) There are the results on total Br while test items on restricted substances are PBBs and PBDEs.

There is the result on total Cr while test item on restricted substances is Cr(VI).

(2) Results are obtained by EDXRF for primary screening, and further chemical testing by ICP-OES (for Cd, Pb, Hg), UV-Vis (for Cr(VI)) and GC-MS (for PBBs, PBDEs) is recommended to be performed, if the concentration exceeds the below warning value according to IEC62321 (unit: mg/kg).

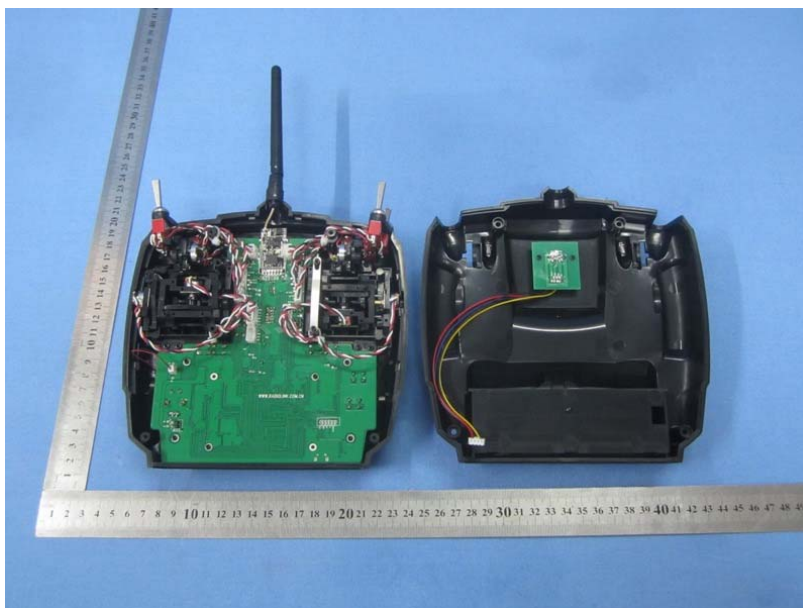
Element	Polymer Material	Metallic Material	Composite Material
Cadmium (Cd)	$P \leq 70 - 3\sigma < IC < 130 + 3\sigma \leq F$	$P \leq 70 - 3\sigma < IC < 130 + 3\sigma \leq F$	$P \leq 50 - 3\sigma < IC < 150 + 3\sigma \leq F$
Lead (Pb)	$P \leq 700 - 3\sigma < IC < 1300 + 3\sigma \leq F$	$P \leq 700 - 3\sigma < IC < 1300 + 3\sigma \leq F$	$P \leq 500 - 3\sigma < IC < 1500 + 3\sigma \leq F$
Mercury (Hg)	$P \leq 700 - 3\sigma < IC < 1300 + 3\sigma \leq F$	$P \leq 700 - 3\sigma < IC < 1300 + 3\sigma \leq F$	$P \leq 500 - 3\sigma < IC < 1500 + 3\sigma \leq F$
Chromium (Cr)	$P \leq 700 - 3\sigma < IC$	$P \leq 700 - 3\sigma < IC$	$P \leq 500 - 3\sigma < IC$
Bromine (Br)	$P \leq 300 - 3\sigma < IC$	--	$P \leq 250 - 3\sigma < IC$

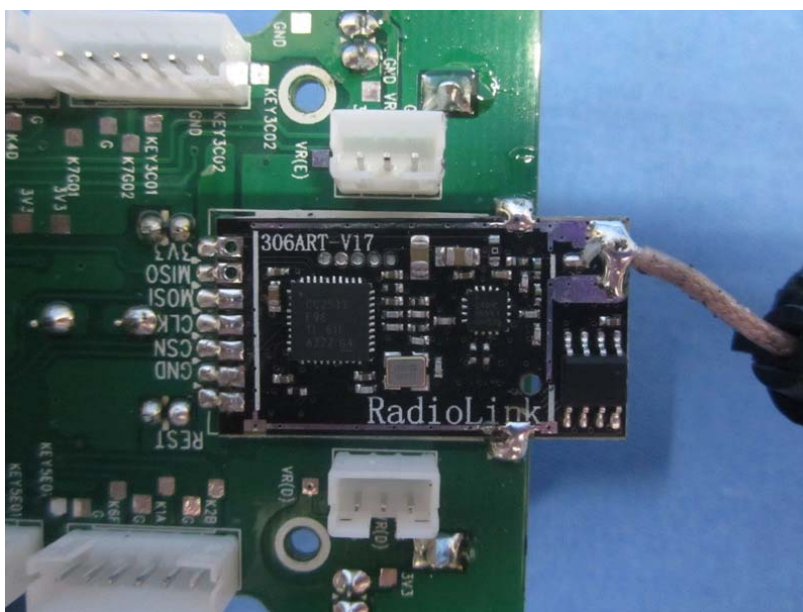
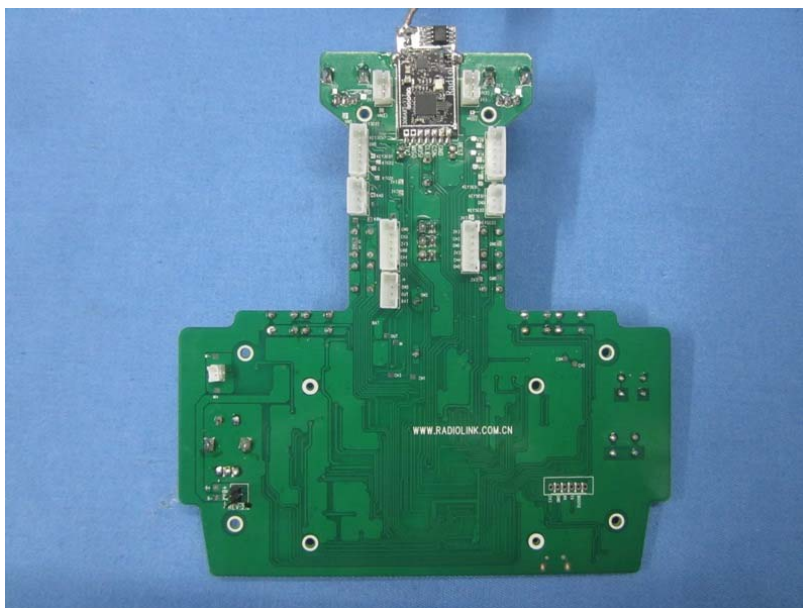
(3) mg/kg = milligram per kilogram

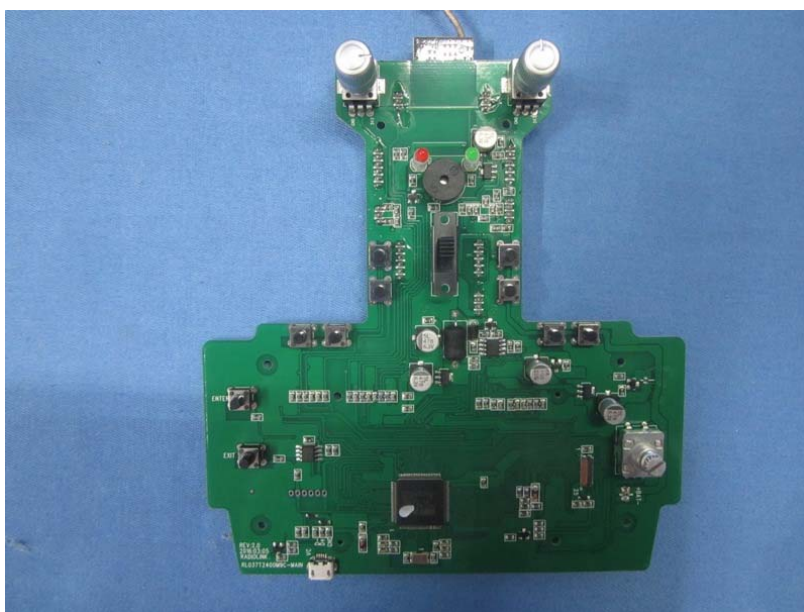
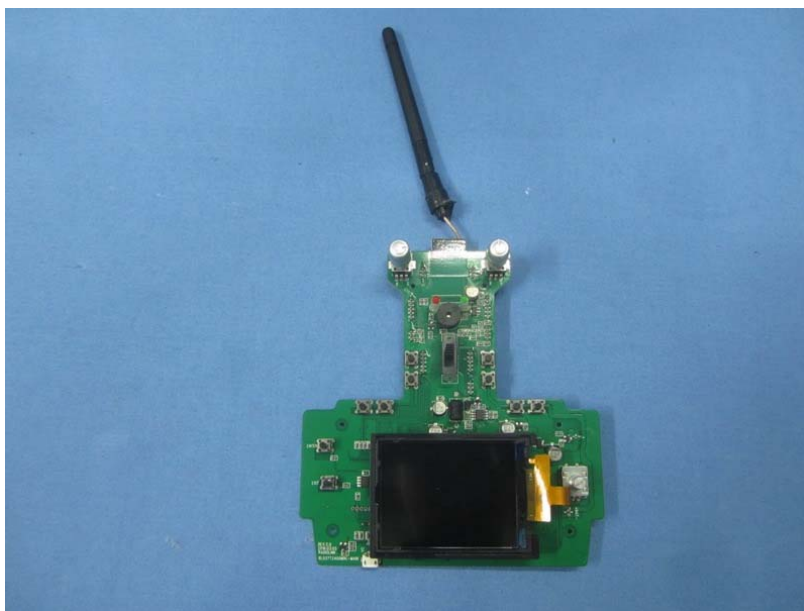
Tested sample photos

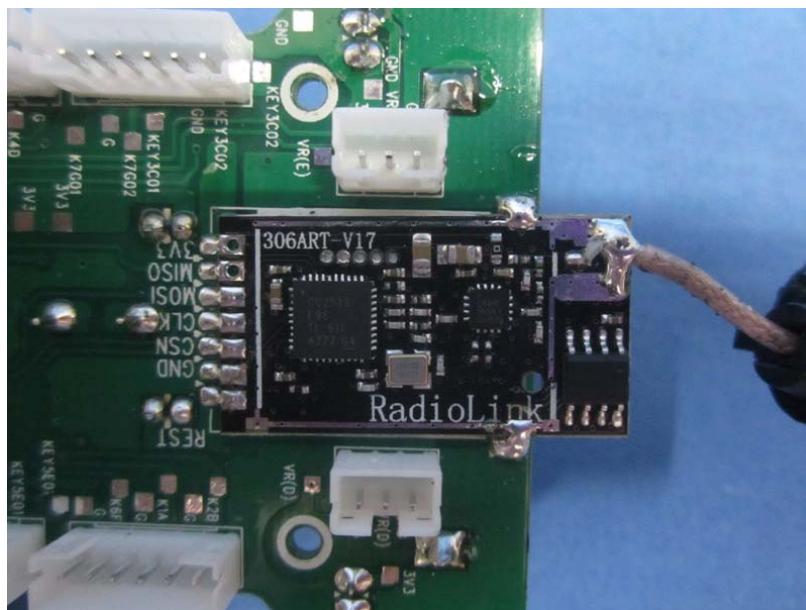
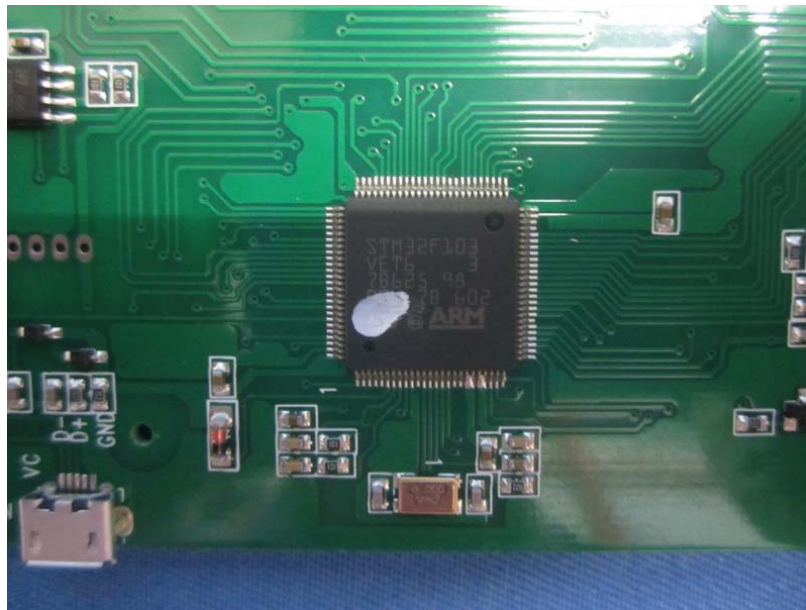




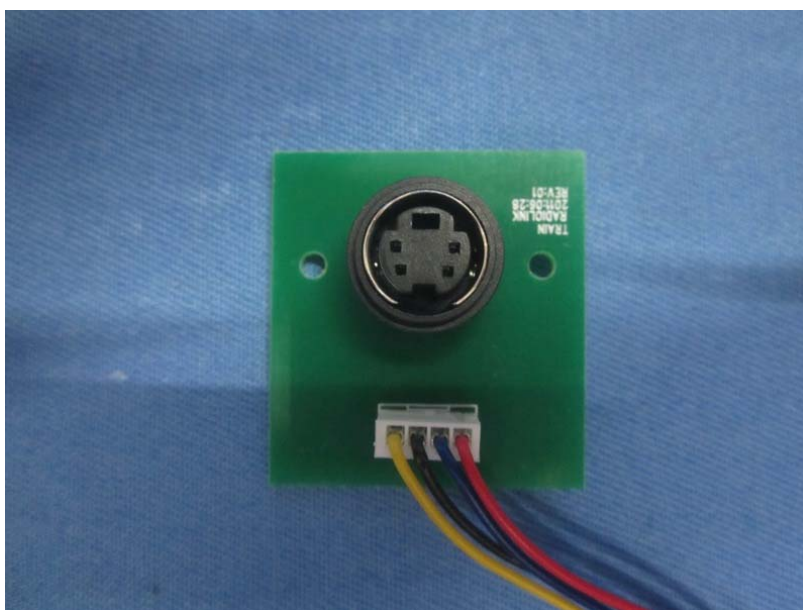
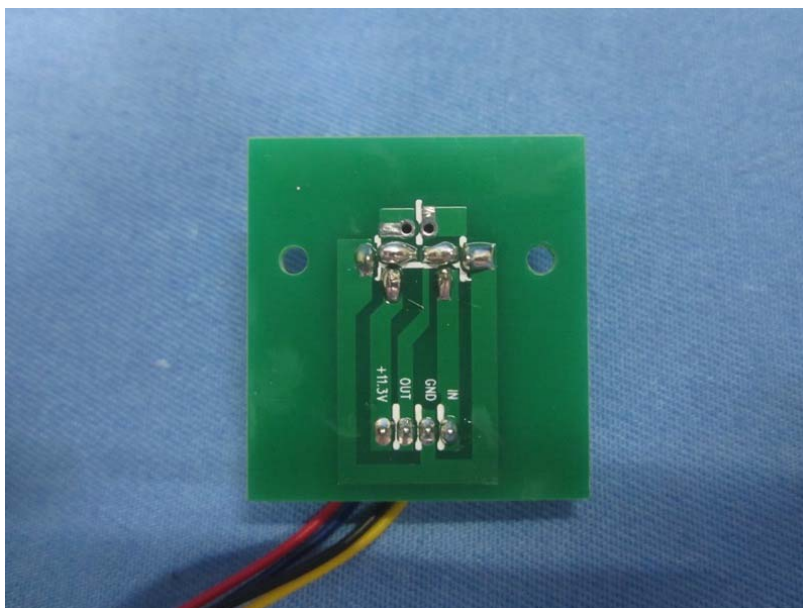












----- End of Report -----